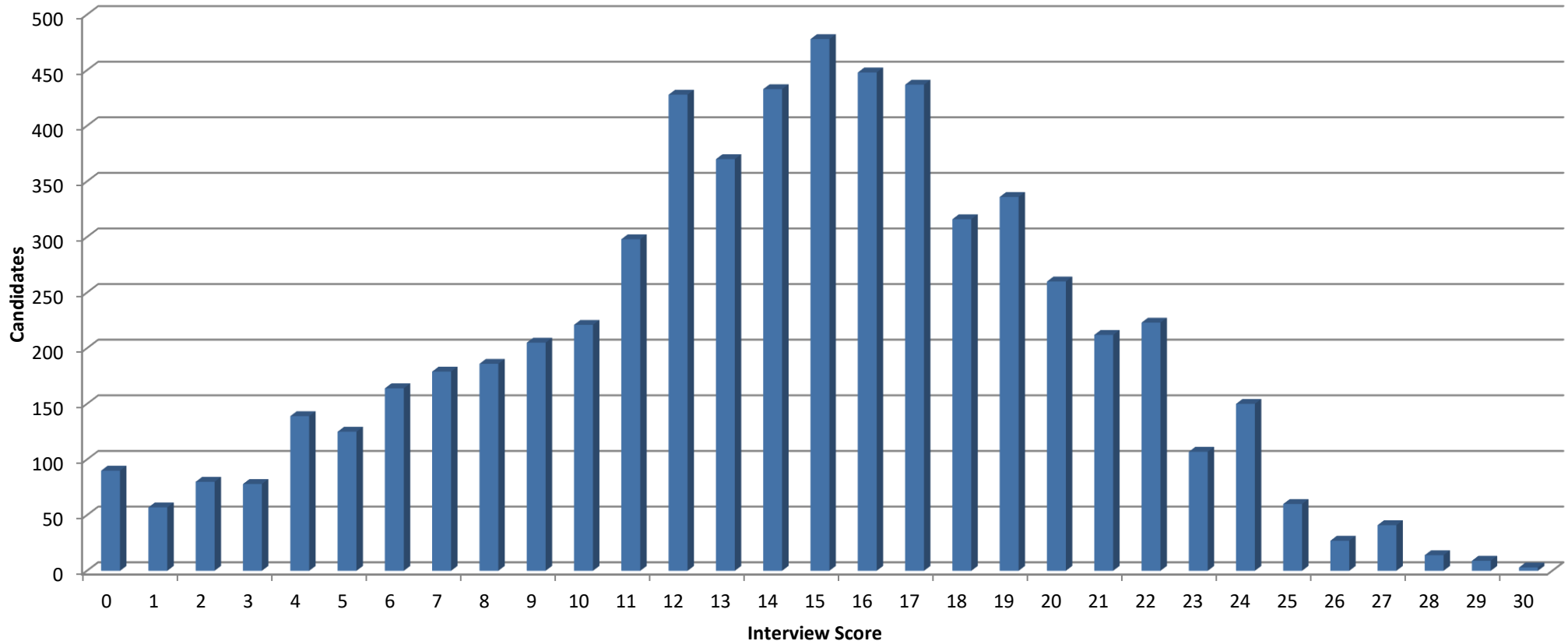


## IMT recruitment – application score data (2013-25 round 1)

### Application score distribution – 2025 IMT recruitment (round 1)

The graph below shows the distribution of application scores awarded to all IMT applications considered for short-listing in 2025 round 1. This includes applications withdrawn prior to longlisting commencing due to their self-assessment score, but excludes those not longlisted or withdrawing their application). The number of applications considered was **8728**; SL scores ranged **from 0-30** (min and max possible were 0-30).

Mean and median averages were **13.75** and **14** respectively.

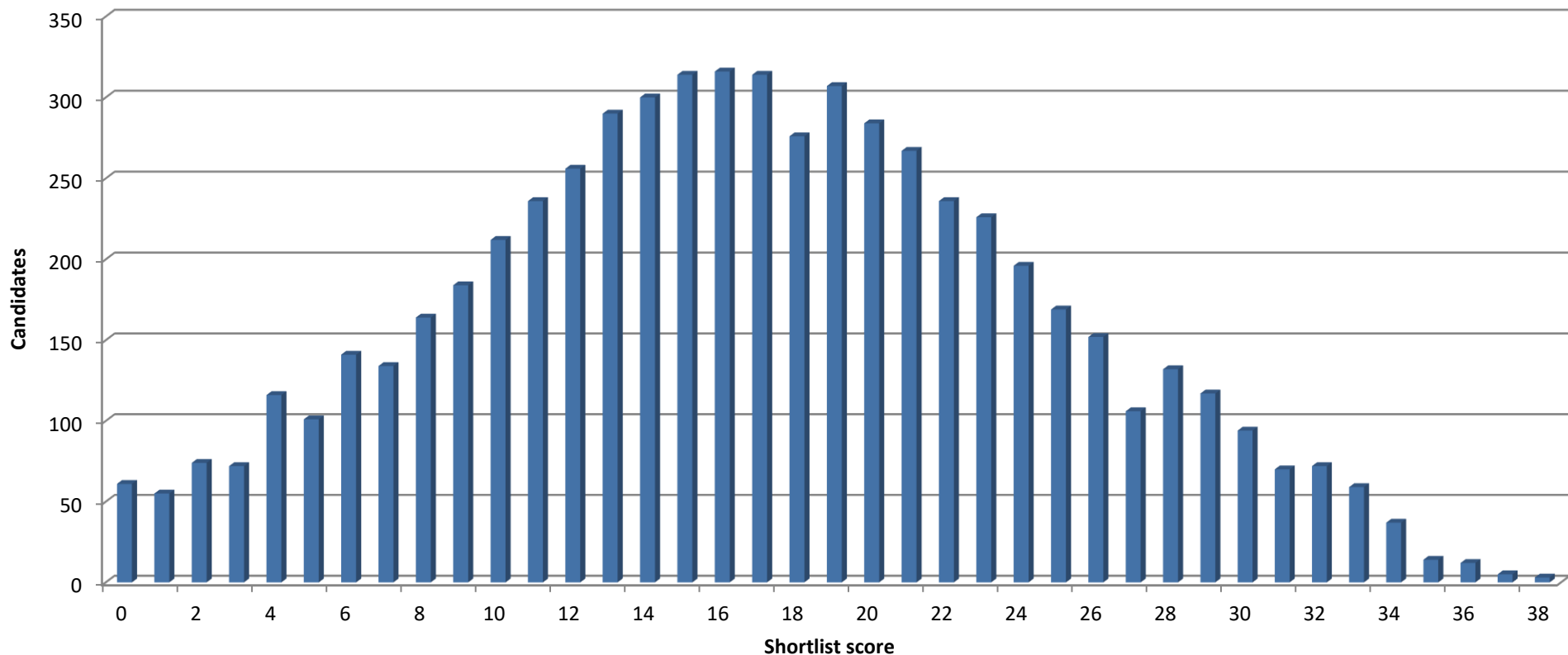


## IMT recruitment – application score data (2013-24 round 1)

### Application score distribution – 2024 IMT recruitment (round 1)

The graph below shows the distribution of application scores awarded to all IMT applications considered for short-listing in 2024 round 1. This includes applications withdrawn prior to longlisting commencing due to their self-assessment score, but excludes those not longlisted or withdrawing their application). The number of applications considered was **6,174**; SL scores ranged **from 0-38** (min and max possible were 0-40).

Mean and median averages were **16.85** and **17** respectively.

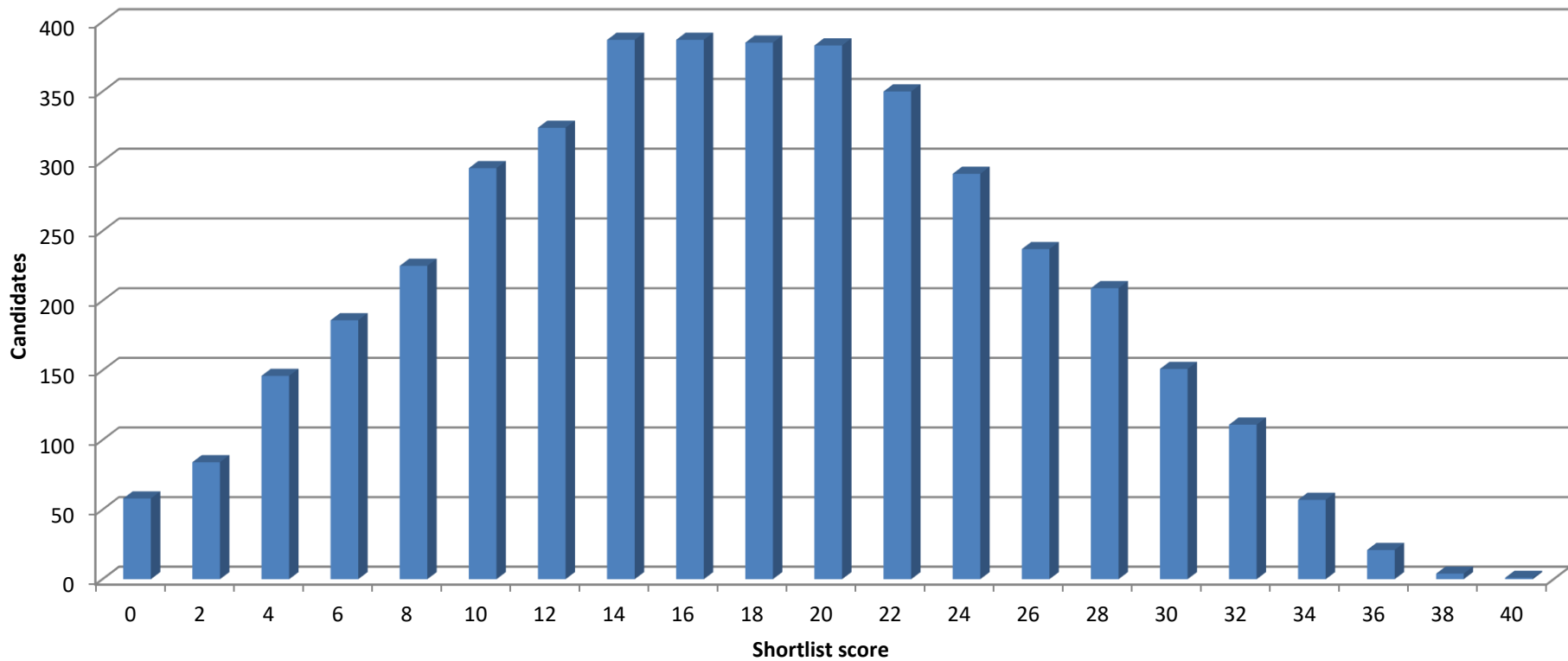


## IMT recruitment – application score data (2013-23 round 1)

### Application score distribution – 2023 IMT recruitment (round 1)

The graph below shows the distribution of application scores awarded to all IMT applications considered for short-listing in 2023 round 1 (i.e. excluding those not longlisted or withdrawn). The number of applications considered was **4,292**; SL scores ranged **from 0-40** (min and max possible were 0-40).

Mean and median averages were **17.83** and **18** respectively.

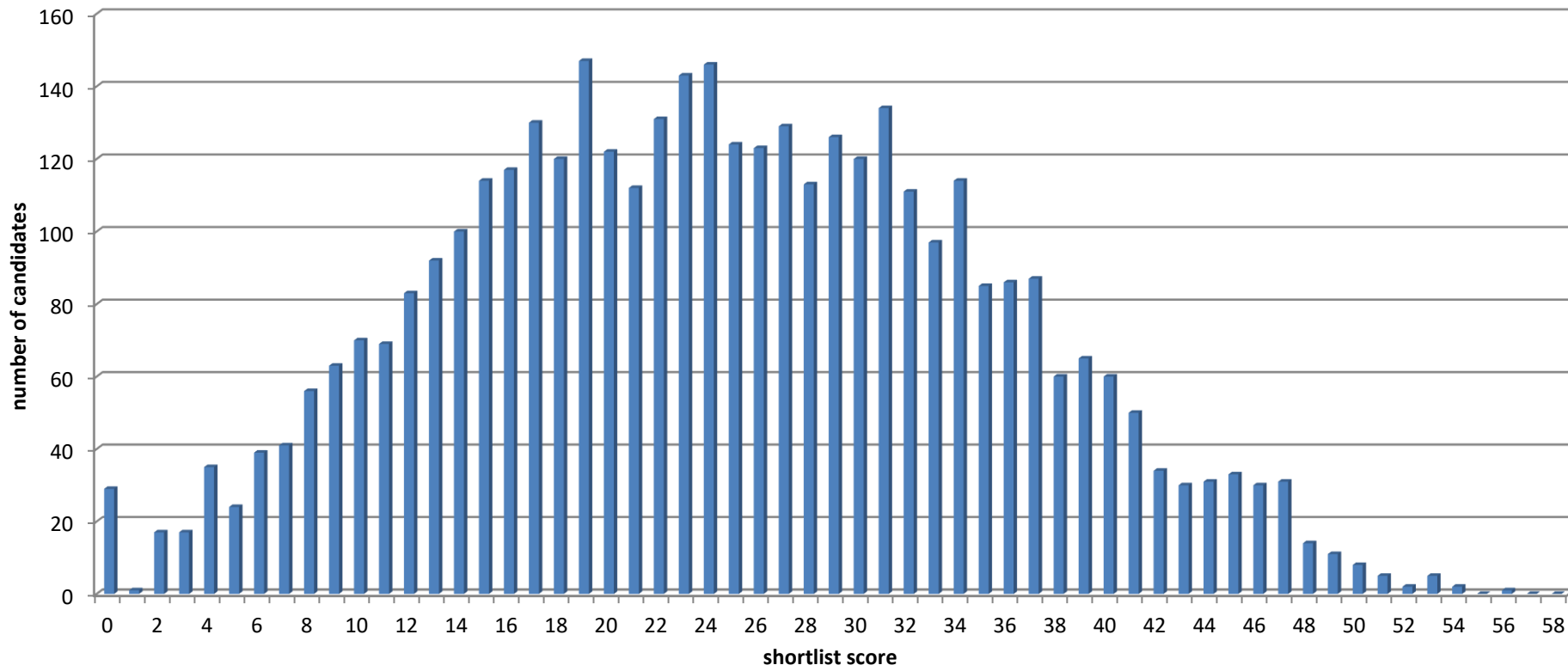


## IMT recruitment – application score data (2013-22 round 1)

### Application score distribution – 2022 IMT recruitment (round 1)

The graph below shows the distribution of application scores awarded to all IMT applications considered for short-listing in 2022 round 1 (i.e. excluding those not longlisted or withdrawn). The number of applications considered was **3,939**; SL scores ranged **from 0-56** (min and max possible were 0-58).

Mean and median averages were **24.49** and **24** respectively.



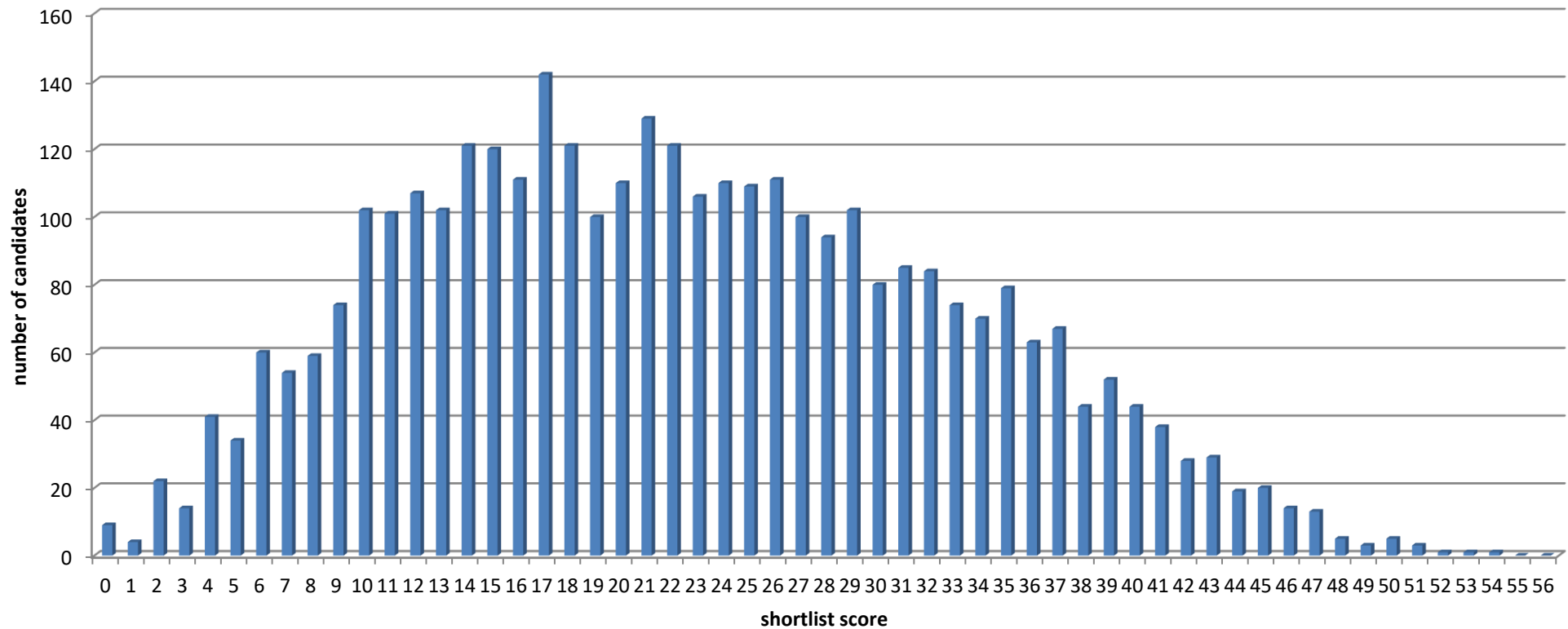
## IMT recruitment – application score data (2013-21 round 1)

### Application score distribution – 2021 IMT recruitment (round 1)

The graph below shows the distribution of application scores awarded to all IMT applications considered for short-listing in 2021 round 1 (i.e. excluding those not longlisted or withdrawn).

The number of applications considered was **3,512**; SL scores ranged **from 0-54** (min and max possible were 0-58).

Mean and median averages were **22.43** and **22** respectively.



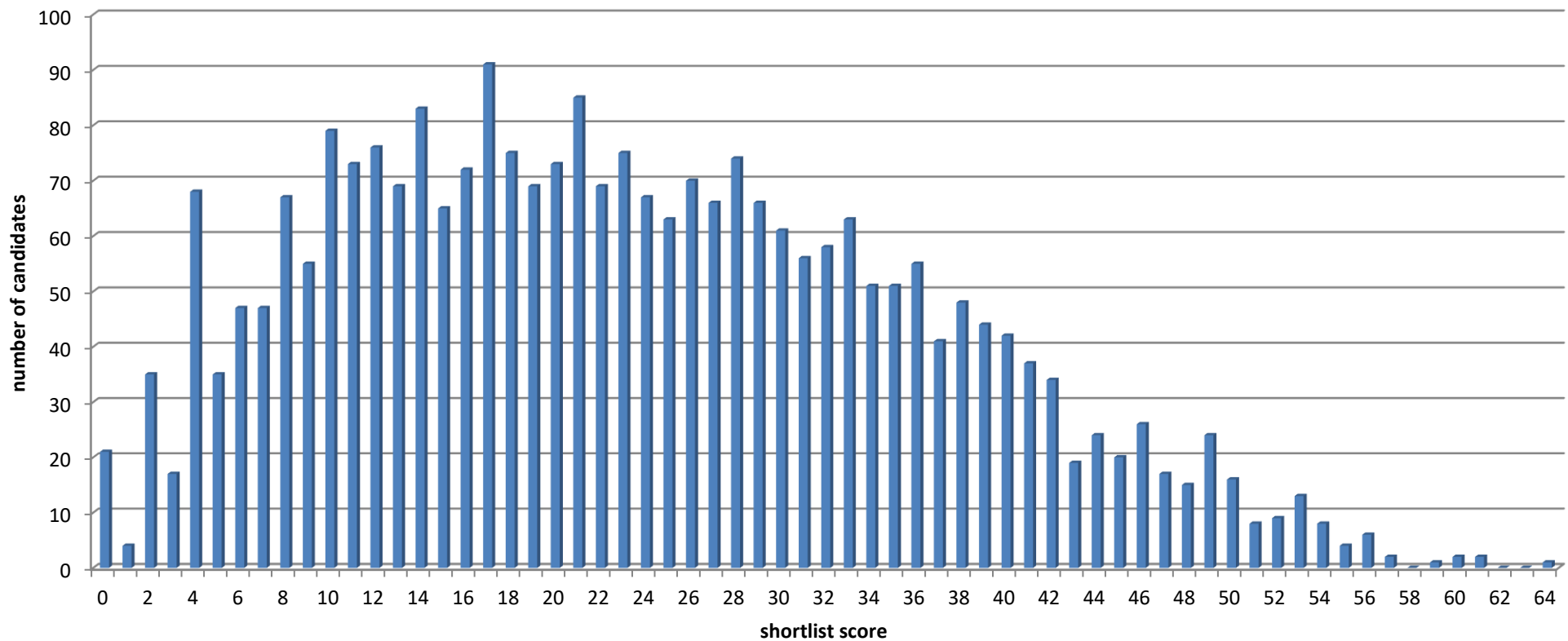
## IMT recruitment – application score data (2013-20 round 1)

### Application score distribution – 2020 IMT recruitment (round 1)

The graph below shows the distribution of application scores awarded to all IMT applications considered for short-listing in 2020 round 1 (i.e. excluding those not longlisted or withdrawn).

The number of applications considered was **2,714**; SL scores ranged **from 0-64** (min and max possible were 0-68).

Mean and median averages were **23.43** and **22** respectively.

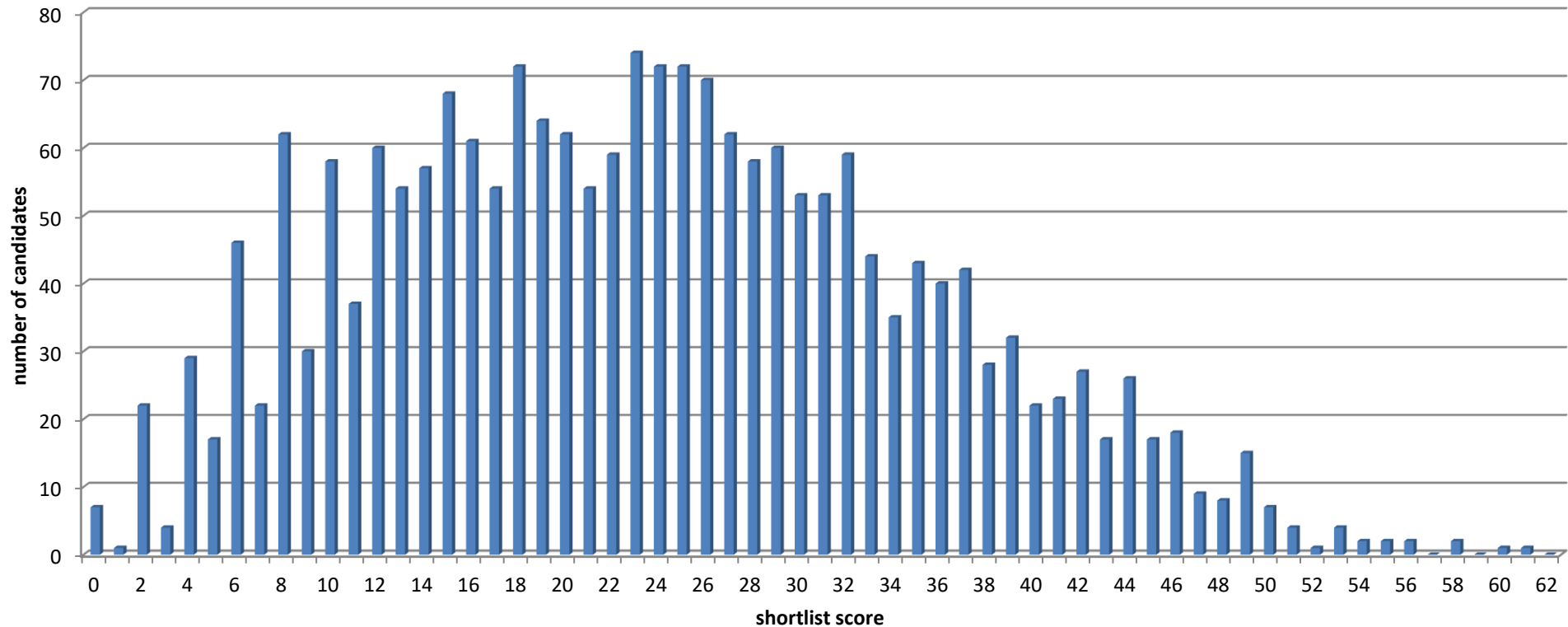


## Application score distribution – 2019 IMT recruitment (round 1)

The graph below shows the distribution of application scores awarded to all IMT applications considered for short-listing in 2019 round 1 (i.e. excluding those not longlisted or withdrawn).

The number of applications considered was **2,105**; SL scores ranged **from 0-61** (min and max possible were 0-68).

Mean and median averages were **23.64** and **23** respectively.

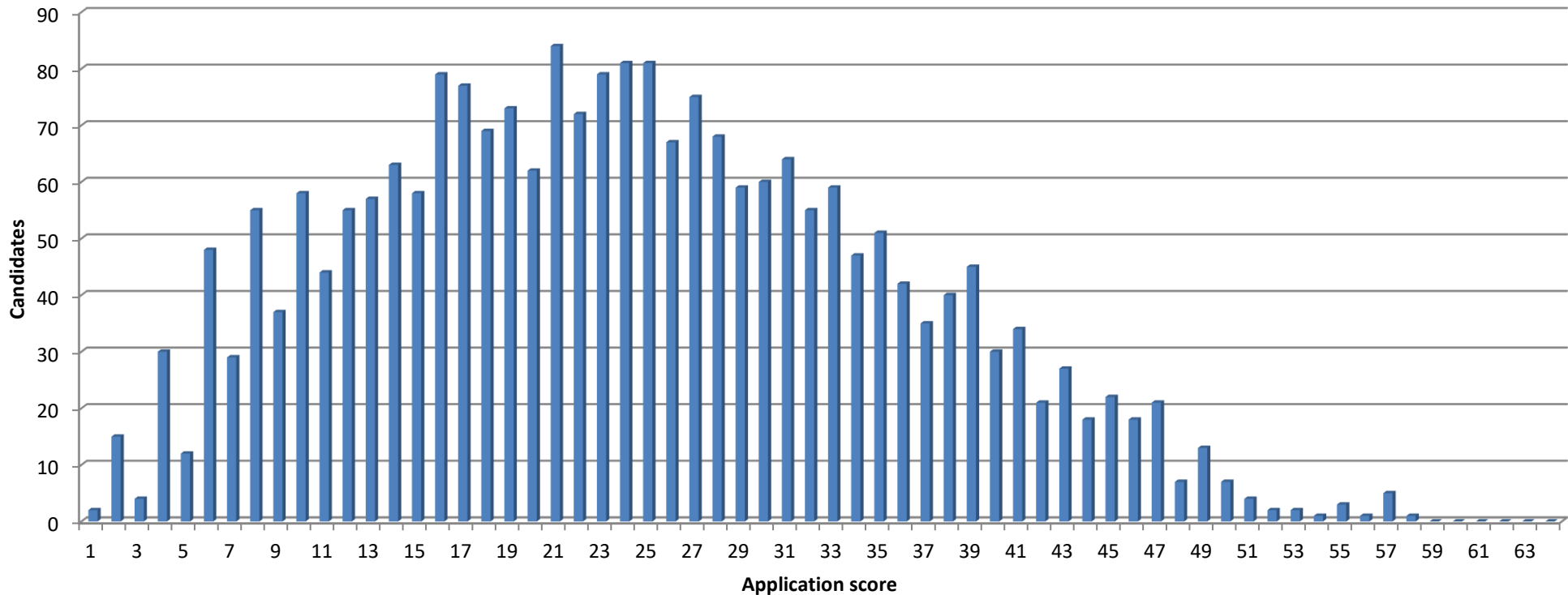


## Application score distribution – 2018 CT1 recruitment (round 1)

The graph below shows the distribution of application scores awarded to all CT1 applications considered for short-listing in 2018 round 1 (ie excluding those not longlisted or withdrawn).

The number of applications considered was **2,337**; SL scores ranged **from 0-58** (min and max possible were 0-64).

Mean and median averages were **24.06** and **23** respectively.



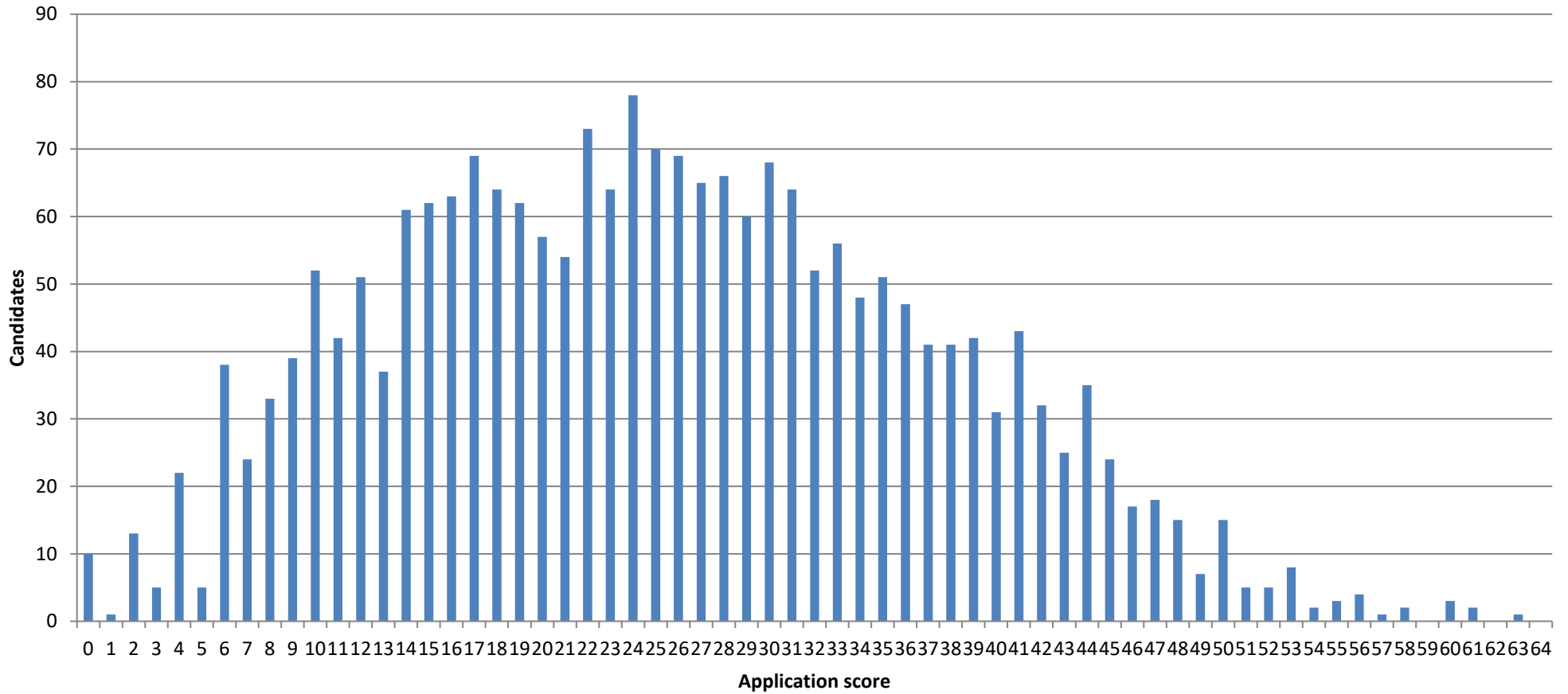
## Application score distribution – 2017 CT1 recruitment (round 1)



The graph below shows the distribution of application scores awarded to all CT1 applications considered for short-listing in 2017 round 1 (ie excluding those not longlisted or withdrawn).

The number of applications considered was **2,217**; SL scores ranged from **0-63** (min and max possible were 0-64).

Mean and median averages were **25.48** and **25** respectively.

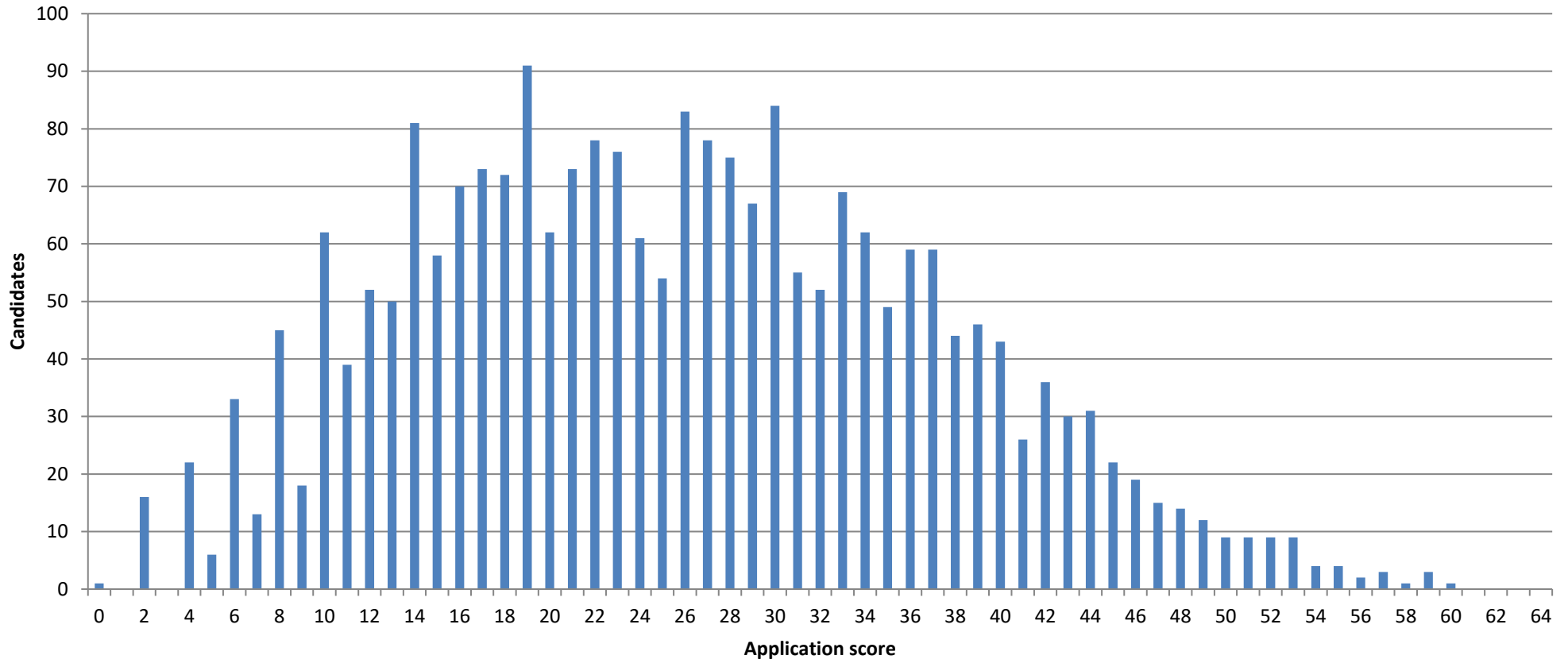


## Application score distribution – 2016 CT1 recruitment (round 1)

The graph below shows the distribution of application scores awarded to all CT1 applications considered for short-listing in 2016 round 1 (ie excluding those not long-listed or withdrawn).

The number of applications considered was **2,381**; SL scores ranged from **0-60** (min and max possible were 0-64).

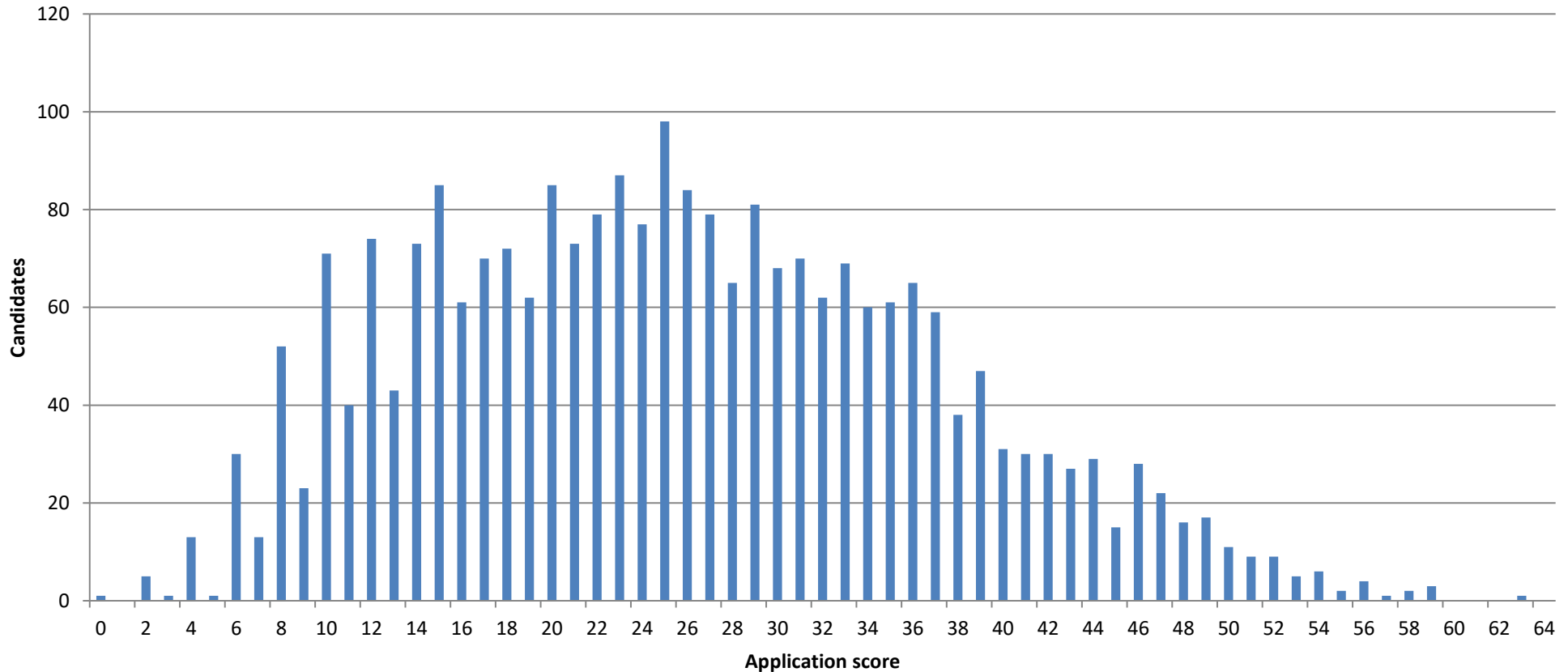
Mean and median averages were **25.70** and **25** respectively.



## Application score distribution – 2015 CT1 recruitment (round 1)

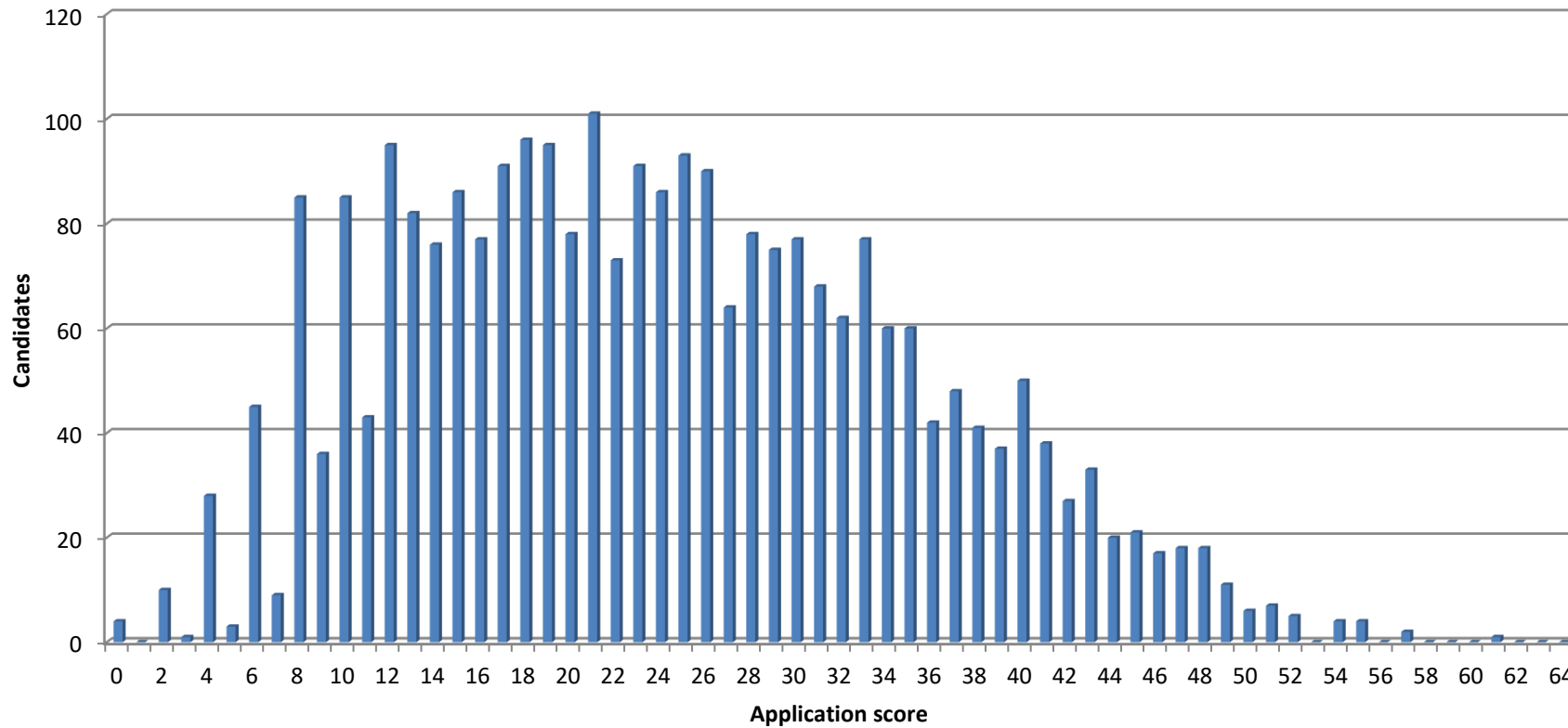
The graph below shows the distribution of application scores awarded to all CT1 applications considered for short-listing in 2014 round 1 (ie excluding those not long-listed or withdrawn).

The number of applications considered was **2,495**; SL scores ranged from **0-63** (min and max possible were 0-64). Mean and median averages were **25.76** and **25** respectively.



## Application score distribution – 2014 CT1 recruitment (round 1)

The graph below shows the distribution of application scores awarded to all CT1 applications submitted in 2014 round 1. The number of applications submitted was **2730**; SL scores ranged from **0-61** (min and max possible were 0-64). Mean, median and modal averages achieved were **24** (24.08), **23** and **21** respectively.



## Application score distribution – 2013 CT1 recruitment (round 1)

The graph below shows the distribution of application scores awarded to all (eligible) 2013 CT1 applications submitted in round 1.

The number of eligible applications submitted was **2,639**; SL scores ranged from **0-63** (min and max possible were 0-64).

Mean, median and modal averages achieved were **23** (22.74), **22** and **23** respectively.

